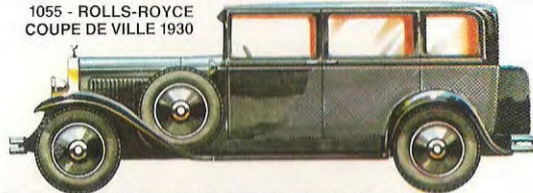


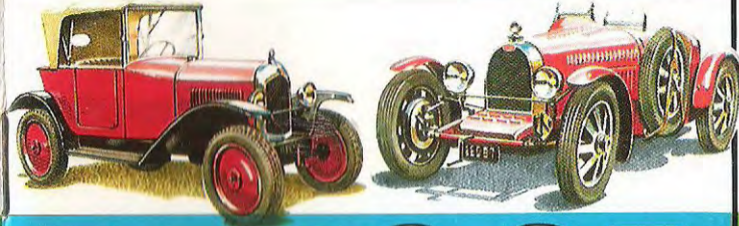
MODÈLES CONFORMES AUX NORMES NF S 51 202 & 203
NE CONVIENNENT PAS AUX ENFANTS DE MOINS DE 3 ANS
NOT RECOMMENDED FOR CHILDREN UNDER 3 YEARS
GEEIGNET FÜR KINDER AB 3 JAHREN
NON CONSIGLIATO AI BAMBINI CON MENO DI 3 ANNI

1055 - ROLLS-ROYCE
COUPE DE VILLE 1930



RENSEIGNEZ-VOUS AUPRÈS DE VOTRE DÉTAILLANT SUR LES NOUVEAUTÉS À PARAÎTRE

Maquette et dessins J. BLANCHE



**l'automobile
miniature
du connaisseur**

* MODÈLE DISPONIBLE
* AVAILABLE MODEL

LES COULEURS DES MODÈLES
PEUVENT ÊTRE MODIFIÉES
SANS PRÉAVIS

N° SIRET 561 053 471 00018
R.C. SEINE 561 053 471 A.R.C. PARIS

ELIGOR

MARQUE ET MODÈLES DÉPOSÉS · MADE IN FRANCE

IMP. B. ARNAUD, LYON - PARIS

ELIGOR®

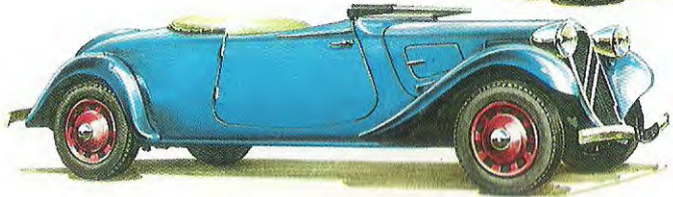
PRODUCTION MODÉLISME · PARIS



1981-82

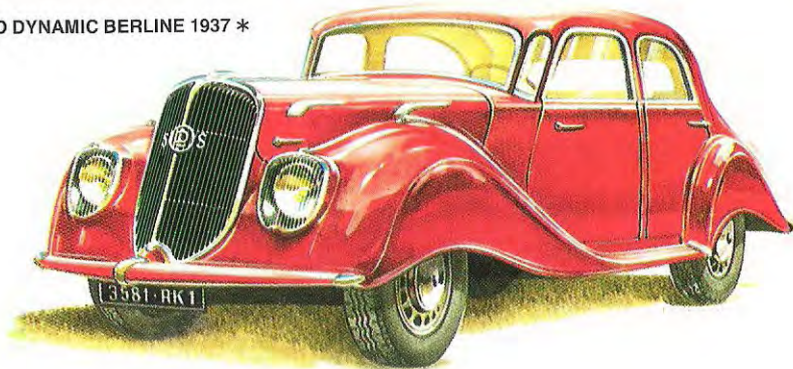
MODEL CARS 1:43
FOR COLLECTORS

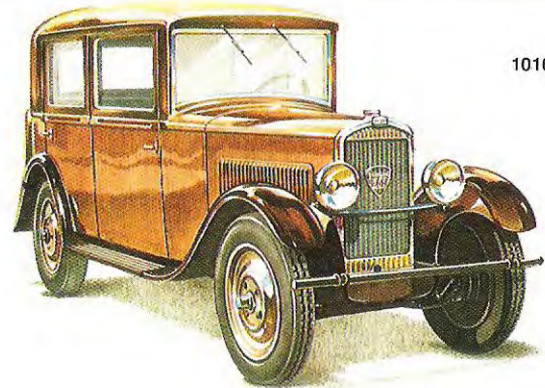
1002 - CITROËN TRACTION AVANT
CABRIOLET 1938 CAPOTE *



1001 - CITROËN
TRACTION AVANT
CABRIOLET 1938
DÉCOUVERT *

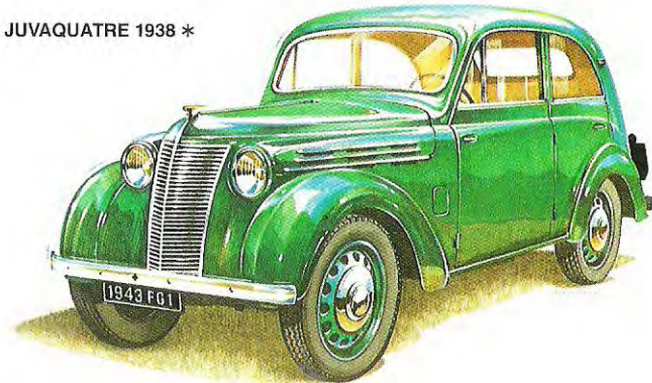
1006 - PANHARD DYNAMIC BERLINE 1937 *

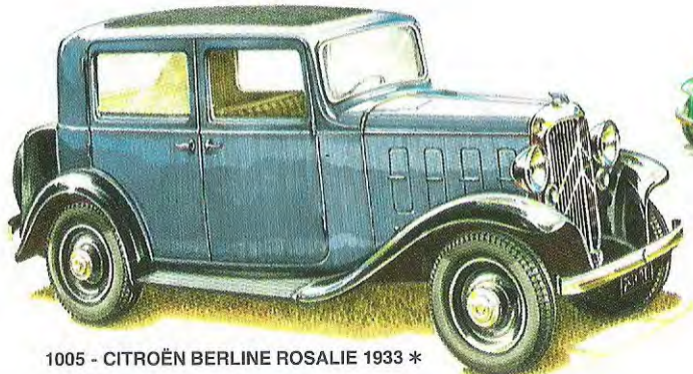




1016 - PEUGEOT 201 BERLINE 1931 *

1014 - RENAULT BERLINE JUVAQUATRE 1938 *





1005 - CITROËN BERLINE ROSALIE 1933 *



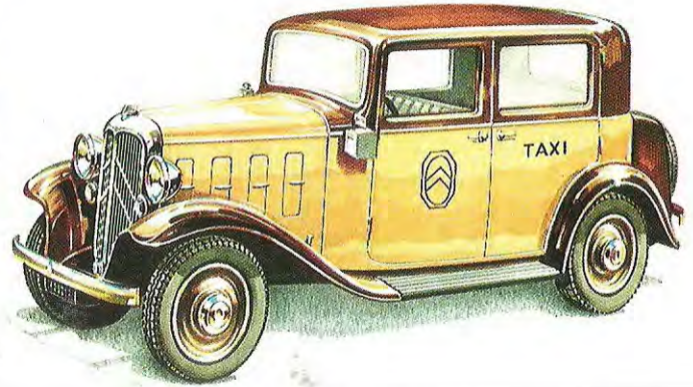
1035 D



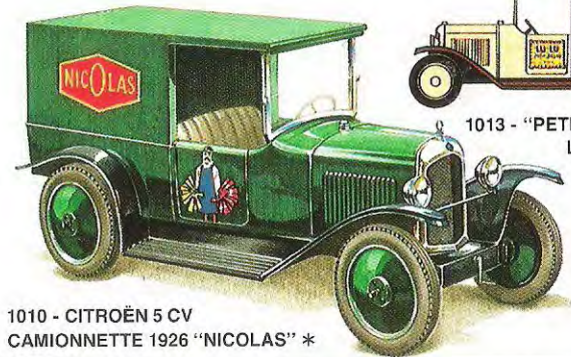
1035 B *



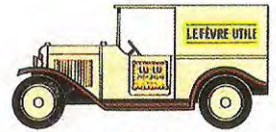
1035 C *



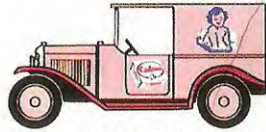
1035 A - CITROËN
TAXI PARISIEN ROSALIE 1934 *



1010 - CITROËN 5 CV
CAMIONNETTE 1926 "NICOLAS" *



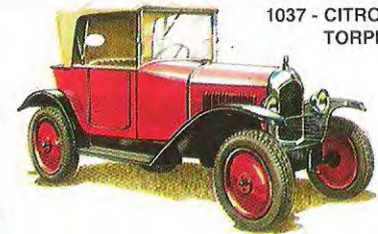
1013 - "PETIT BEURRE
LU-LU" *



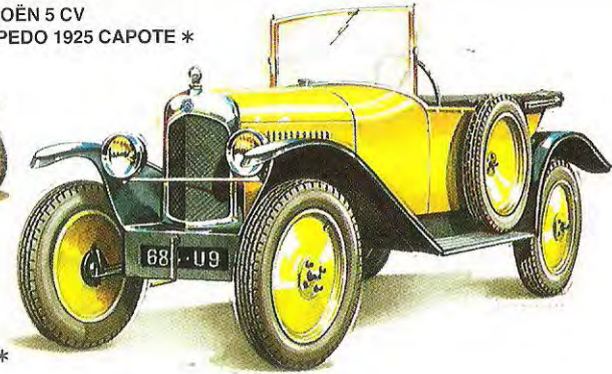
1018 - "BÉBÉ CADUM" *



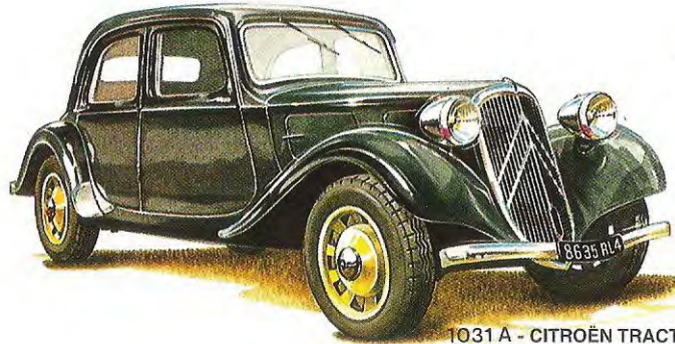
1011 - "GOODRICH" *



1037 - CITROËN 5 CV
TORPEDO 1925 CAPOTE *



1017 - CITROËN 5 CV
TORPEDO 1925 DÉCOUVERT *



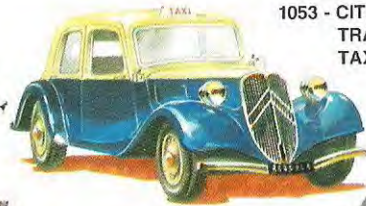
1031 A - CITROËN TRACTION AVANT BERLINE 11 BL 1938 *



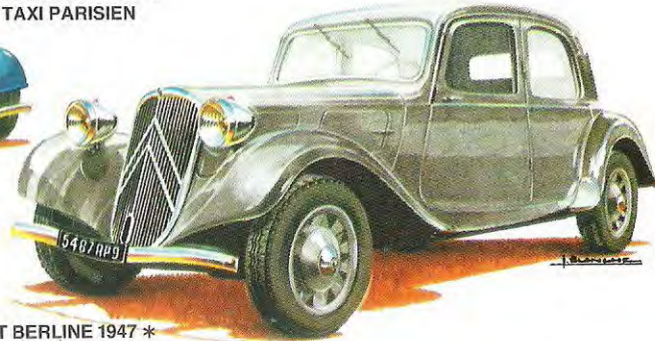
1032 A - MILITAIRE GRIS 1942 *



1032 B - MILITAIRE KAKI 1944 *



1053 - CITROËN
TRACTION AVANT
TAXI PARISIEN

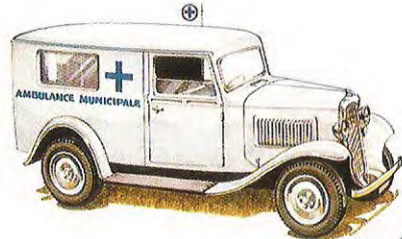
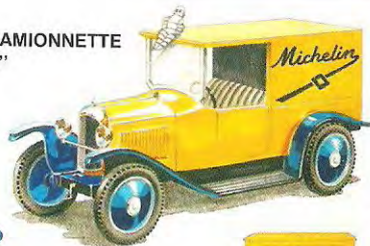


1031 B - CITROËN TRACTION AVANT BERLINE 1947 *

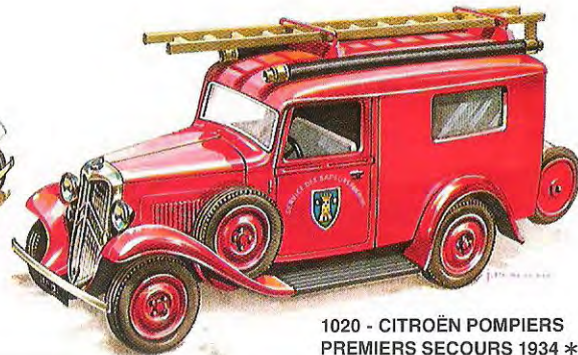


1050 - CITROËN CAMIONNETTE
500 KG 1934 "MICHELIN" *

1054 - CITROËN 5 CV CAMIONNETTE
1926 "MICHELIN"



1021 - CITROËN AMBULANCE 1934 *



1020 - CITROËN POMPIERS
PREMIERS SECOURS 1934 *



1007 - "DUBONNET" *



1009 - "VACHE QUI RIT" *



1008 - "ESSO" *



1012 - "CINZANO" *



1019 - "SAINT-RAPHAËL" *



1022 - CITROËN CAMIONNETTE 500 KG 1934 "WATERMAN" *



1023 - "LUSTUCRU" *



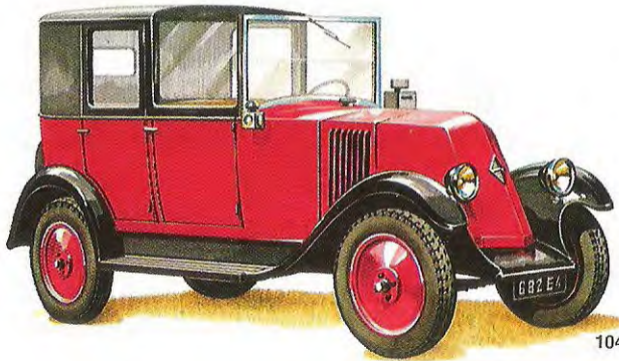
1029 - "BYRRH" *



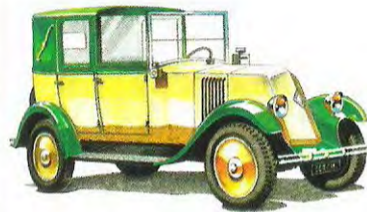
1024 - "RIVOIRE & CARRET" *



1034 - "BÉNÉDICTINE" *



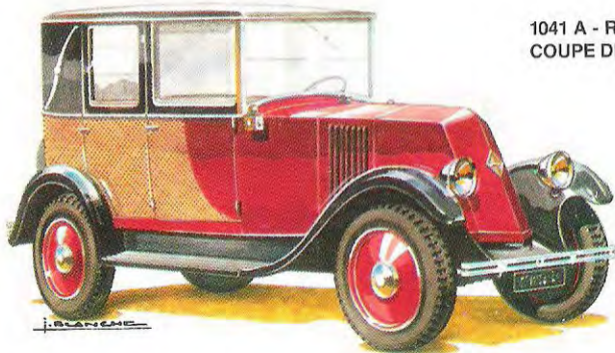
1042 A - RENAULT KZ TAXI PARISIEN 1928



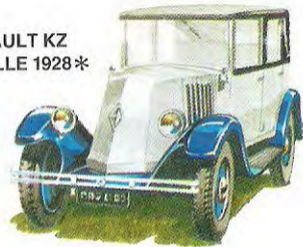
1042 C - RENAULT KZ TAXI



1040 - RENAULT NN TORPEDO 1927 CAPOTE *

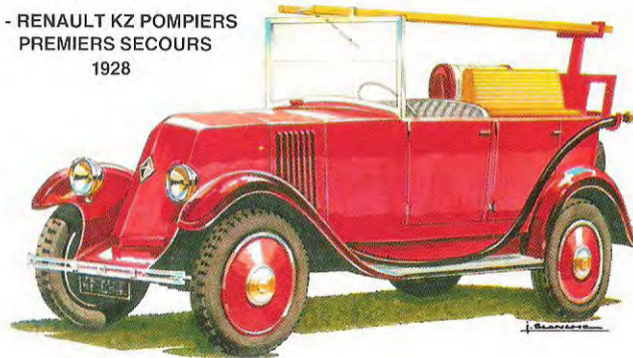


1041 A - RENAULT KZ
COUPE DE VILLE 1928*



1041 B - RENAULT KZ
COUPE CHAUFFEUR 1928*

1049 - RENAULT KZ POMPIERS
PREMIERS SECOURS
1928



1051 - ROLLS-ROYCE TAXI
HÔTEL "CARLTON" *



1030 - ROLLS-ROYCE
LIMOUSINE 20/25 1928 *



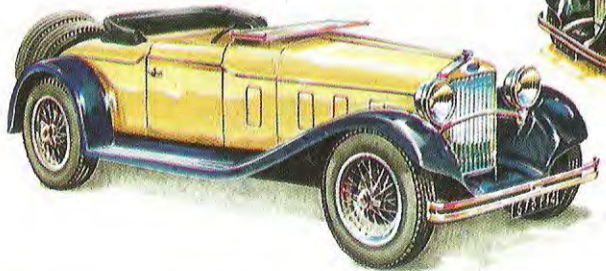
1048 - BENTLEY "T" BERLINE 1976



1047 - ROLLS-ROYCE
BERLINE SILVER SHADOW 1976 *



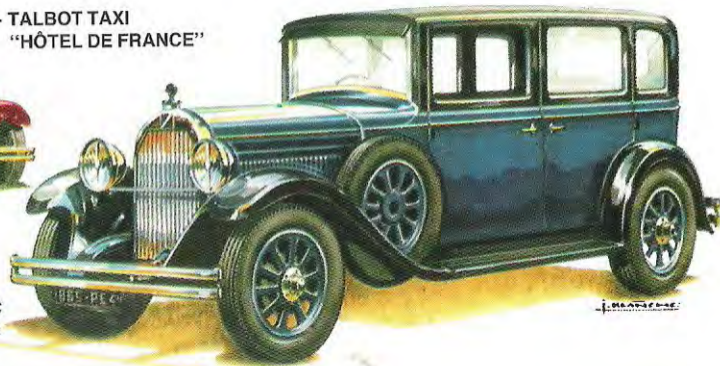
1039 - DELAGE D8 CABRIOLET 1934 CAPOTE *



1038 - DELAGE D8 CABRIOLET 1934
DÉCOUVERT *

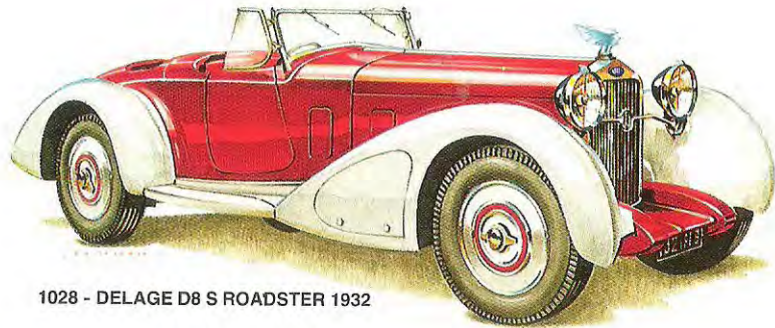


1052 - TALBOT TAXI
"HÔTEL DE FRANCE"



1036 - TALBOT PACIFIC
LIMOUSINE 1930 *

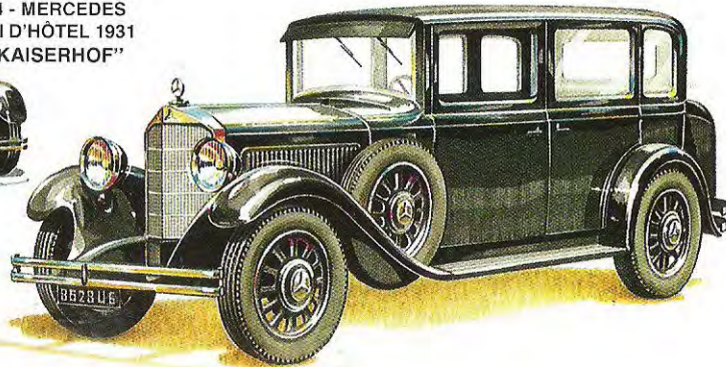
J. MONTAGNE



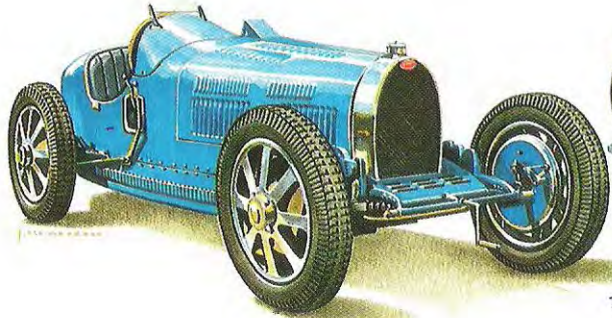
1028 - DELAGE D8 S ROADSTER 1932



1044 - MERCEDES
TAXI D'HÔTEL 1931
"KAISERHOF"



1043 - MERCEDES
LIMOUSINE
"NÜRBURG" 1929 *



1025 - BUGATTI 35 B COURSE 1927



1045 - BUGATTI 35 B SPORT 1928



1046 - BUGATTI "ROYALE" COACH KELLNER 1931